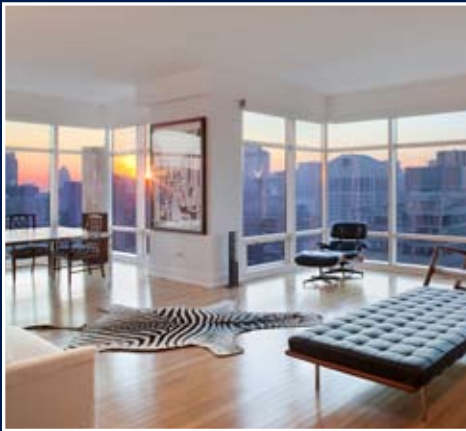


SIGNIFICANT SALES

REPRESENTED BY THE **Sotheby's INTERNATIONAL REALTY**[®] NETWORK

June 2010



Sotheby's International Realty - Greenwich - Pickwick Plaza Brokerage, \$31,375,000 (Connecticut, USA)



Designed by Greville Richard in 1939 and located on 22 acres, this 28-room French Normandy estate achieves a blend of contemporary refinement and Pre-War elegance, with views of Long Island Sound and the New York City skyline.

The interior features eight bedrooms, 9.3 baths and regally-scaled public rooms including the English hall with floor-to-ceiling fireplace, dining room with access to the terrace, library with French walnut woodwork and the living room with fireplace and French doors to the parterre.

Showcasing Italian limestone countertops, the gourmet kitchen has a sun-filled breakfast area. The main level also has a 10-seat theatre, indoor pool, garden room and state-of-the-art gymnasium. Upstairs, the second floor is highlighted by a master suite with fire-lit bedroom, balcony, two baths and custom dressing rooms. Four additional bedrooms and staff quarters are complemented by a third-floor suite and billiards room. A 50-foot swimming pool, tennis court, greenhouse, gazebos and cottage complete this pre-war estate.

Every home is a masterpiece

Dedicated to the extraordinary



Sotheby's International Realty - Greenwich -
Pickwick Plaza Brokerage, \$22,888,890
(Connecticut, USA)

One of the last great estates, Old Mill Farm showcases museum-quality details throughout its 15,800 square-foot Tudor mansion. The great hall has a 40-foot ceiling, and the main house's fifteen bedrooms are accompanied by 11.6 baths.

On 75 acres, the grounds feature formal gardens, terraced pool, tennis court, greenhouse, stable, staff houses, log cabin and pond.

Kuper Sotheby's International Realty
\$12,500,000 (Texas, USA)

This property has 1.7 miles of Llano River, 1.7 miles of the James River and 2 miles of Mill Creek. There is a 5,366 square foot main lodge, foreman's home and two cabins, as well as a shop and implement shed. There also are stables with an office and cattle pens.





Sotheby's International Realty - East Side
Manhattan Brokerage, \$11,700,000
(New York, USA)

Located in one of Rosario Candela's most revered Fifth Avenue prewar cooperative buildings, this seven-room residence has grandly scaled rooms with 11-foot ceilings, original architectural details and tree-lined views of Central Park.

A gallery opens to a paneled library and a living room/dining room. Both rooms feature wood-burning fireplaces with marble surrounds and hardwood floors. A powder room and spacious walk-in coat closet are adjacent. The private quarters are made up of a corner master bedroom with three windows and a second bedroom, each with en-suite bathrooms. A kitchen, pantry, servants hall and laundry adjoin two staff bedrooms with two bathrooms.

Unrivaled Access

Sotheby's International Realty - Bridgehampton
Brokerage, \$8,400,000 (New York, USA)

This seven-bedroom home is 8,200 square-feet and has a gunite pool and spa. Near the ocean, it has state-of-the-art materials and appointments and a marble kitchen.



For those who value the unique



Sotheby's International Realty - East Side
Manhattan Brokerage, \$8,295,000
(New York, USA)

Located atop the prestigious Cesar Pelli designed One Beacon Court, this three-bedroom condominium has unobstructed views of the Manhattan skyline and Central Park. A rectangular entry gallery opens to a large corner living room/dining room with 10-foot ceilings and floor-to-ceiling glass walls.

There is a state-of-the-art eat-in kitchen, private quarters with a master bedroom that has an ensuite marble bathroom and walk-in closet. There also are two bedrooms, each with en-suite bathroom, a powder room and storage room with full laundry. Amenities include 24-hour doorman, concierge, valet parking, fitness center and entertaining suite.

Sotheby's International Realty - Greenwich -
Pickwick Plaza Brokerage, \$8,200,000
(Connecticut, USA)

This newly-crafted stone Georgian is on two acres at the end of a quiet, mid-country cul-de-sac. The 11,000 square-foot home has six bedrooms including a master bedroom and lower-level staff suite. Outdoor amenities include an expansive terrace with a fireplace and swimming pool.





*M*orris & Fyrwald Sotheby's International Realty
\$8,000,000 (Colorado, USA)

Adjacent to the Northstar Preserve and National Forest land and on the banks of the Roaring Fork River, the exclusive Morningstar subdivision allows for a total of only seven homes.

While secluded and private, Morningstar is within a seven minute scenic drive of the mountain resort town of Aspen, yet a world away from the traffic and activity on the opposite end of town. Meadowood is a 1.4 acre homesite with views of Independence Pass and private river access. State-of-the-art green building techniques are being used to construct an estate that will include: accents of timber and stone, separate hearth room with gas fireplace and spacious deck, master suite with gas fireplace, lower level media room and game room with bar, spa and upper level office with balcony.

Connoisseurs of life

*K*uper Sotheby's International Realty
\$7,941,132 (Texas, USA)

This 4,648-acre historic stone ranch features a Mexican colonial style hacienda and 35-acre lake. The main hacienda was constructed in 1948 and features an entertainment courtyard that links to the guest house and garage/barn adjoined by staff quarters. This ranch has a tremendous amount of water, with a seven-mile boundary of the Rio Grande River, five-miles of an irrigation canal with water rights which flows fresh water into a 35-acre lake, as well as five stocked tanks.





*W*ard Wight Sotheby's International Realty
\$7,665,000 (New Jersey, USA)

Sitting on the historic Warren Hotel property, this oceanfront home has panoramic ocean views. It has seven bedrooms including two master bedroom suites, nine custom baths, two levels of wraparound porches, chef's kitchen and bar, wine cellar, study, two garages and a five-stop elevator.

*R*uss Lyon Sotheby's International Realty
\$7,500,000 (Arizona, USA)

This 3.65 acre estate is in the exclusive upper canyon community of Silverleaf. With its classically designed Tom Weiskopf golf course, clubhouse and spa, Silverleaf represents the desert experience at its highest level.

The estate's design, by Mark Candelaria, was inspired by his study of courtyard homes in Italy and Spain. Newly constructed by Ed West, the 12,500 square-foot home has hand-troweled walls in old world Venetian plaster, detailed ceilings and limestone carved fireplaces. There are five bedrooms, each with full ensuite and each with a private terrace, as well as a raised negative edge pool.





Sotheby's International Realty - East Hampton
Brokerage, \$7,340,000 (New York, USA)

This 1890s home was updated for the interior designer's own private residence. Located near Main beach, it has original millwork, three fireplaces and 11 bedrooms. It is located on 1.14-acres with age-old trees and gardens. There also is a heated pool, guest/carriage house, pool house with half bath and Jacuzzi.

Artfully Uniting

Sotheby's International Realty - Palm Beach
Brokerage, \$6,500,000 (Florida, USA)

This oceanfront estate has four bedrooms, each with its own bath, balcony and water views. It also has large formal rooms with high ceilings and marble floors. There is an eat-in kitchen facing the pool, a gym and front motorcourt and side service driveway.





Peaks Real Estate Sotheby's International Realty
\$6,480,000 (Colorado, USA)

This five- bedroom home overlooks a ski trail and has ridge views, as well as a trailside hot tub on the patio. Constructed in 2002, it is located in the exclusive resort community of Telluride Mountain Village.

The residence is steps from the longest and most scenic trail on the ski-mountain, the Galloping Goose, offering ski-in/ski-out access. The exterior of the residence is constructed of oversized log and local stone, custom windows and large deck space. It also has a hot tub on the lower patio. The interior of the home features a wood frame with hand-hewn log walls. The master suite is located on the main level and is equipped with walk-in closet, two-way fireplace shared with a sitting area and French doors leading out to the deck. Each guest bedroom also incorporates walk-in closets and bathrooms ensuite.

ONE Sotheby's International Realty
\$6,300,000 (Florida, USA)

This direct intracoastal estate has views of Lake Boca Raton. It has seven bedroom suites, nine baths, a theatre, casino, billiard's room, exercise room, library and elevator. There also is a pool and spa with summer kitchen.



- 🏡 Realogics Sotheby's International Realty - \$6,250,000 (Washington, USA)
- 🏡 Sotheby's International Realty Southampton Brokerage - \$6,000,000 (New York, USA)
- 🏡 Sotheby's International Realty Beverly Hills Brokerage - \$5,750,000 (California, USA)
- 🏡 Czech Republic Sotheby's International Realty - 91,000,000 (CZE), \$4,623,750(USD) (Prague, Czech Republic)
- 🏡 Sotheby's International Realty Canada (Vancouver Downtown) - \$4,500,000 (Vancouver, Canada)
- 🏡 Morris & Fyrwald Sotheby's International Realty - \$5,700,000 (Colorado, USA)
- 🏡 Litchfield Hills Sotheby's International Realty - \$5,414,738 (Connecticut, USA)
- 🏡 Healdsburg Sotheby's International Realty - \$4,950,000 (California, USA)
- 🏡 Daniel Gale Sotheby's International Realty - \$4,630,000 (New York, USA)
- 🏡 Daniel Gale Sotheby's International Realty - \$4,400,000 (New York, USA)

Artfully uniting extraordinary homes
with extraordinary lives.